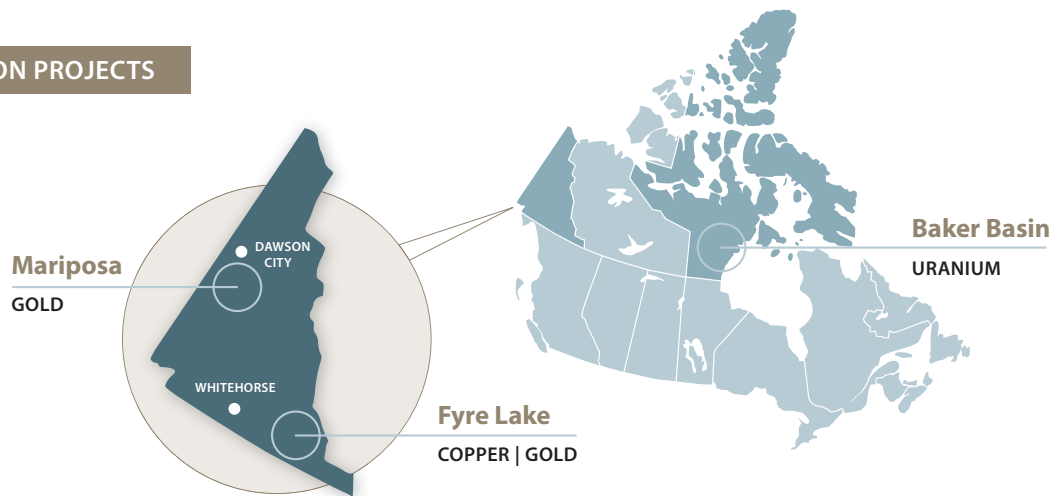


## New Gold Discovery in the White Gold District

### EXPLORATION PROJECTS



#### MARIPOSA

##### YUKON'S WHITE GOLD DISTRICT

- 2011 | first hole drilled on property returned 2.44 grams/tonne gold over 38.9 metres
- \$4.0 million spent to date
- 2012 | continued drilling

##### Additional Gold Properties

- Eureka Dome
- Gold Cap
- Polar Stewart
- 2012 | drill target definition

#### FYRE LAKE

##### YUKON'S FINLAYSON DISTRICT

- Copper-gold-cobalt massive sulphide deposit
- NI 43-101 resource open for expansion
- 2012 | continued evaluation

#### BAKER BASIN

##### NUNAVUT

- Drill-indicated uranium
- 2012 | available for joint venture

### INVESTMENT HIGHLIGHTS

- Proven management with 40 years of discovery and mine-finding experience
- Major player in the Yukon's White Gold District with new bedrock gold discovery
- Financed for 2012 exploration program of continued drilling and trenching
- Commodity diversification with emphasis on gold in the Yukon. Additional exposure to copper, cobalt and uranium holdings.



2011 Drilling at Mariposa

## MARIPOSA

Of Pacific Ridge's four properties in the White Gold District, the 262 square kilometre Mariposa property is the furthest advanced. Mariposa, acquired in 2009, is 15 kilometres southeast of Kinross's White Gold deposit, and 12 kilometres northeast of Kaminak's Coffee discoveries.

A prominent indicator of gold in the area is an active placer gold operation currently mining the gravels of Scroggie and Mariposa Creeks.

In 2011, Pacific Ridge conducted 6000 metres of drilling in the first ever test for a bedrock source of this placer gold.

### Mariposa 2011 Highlights

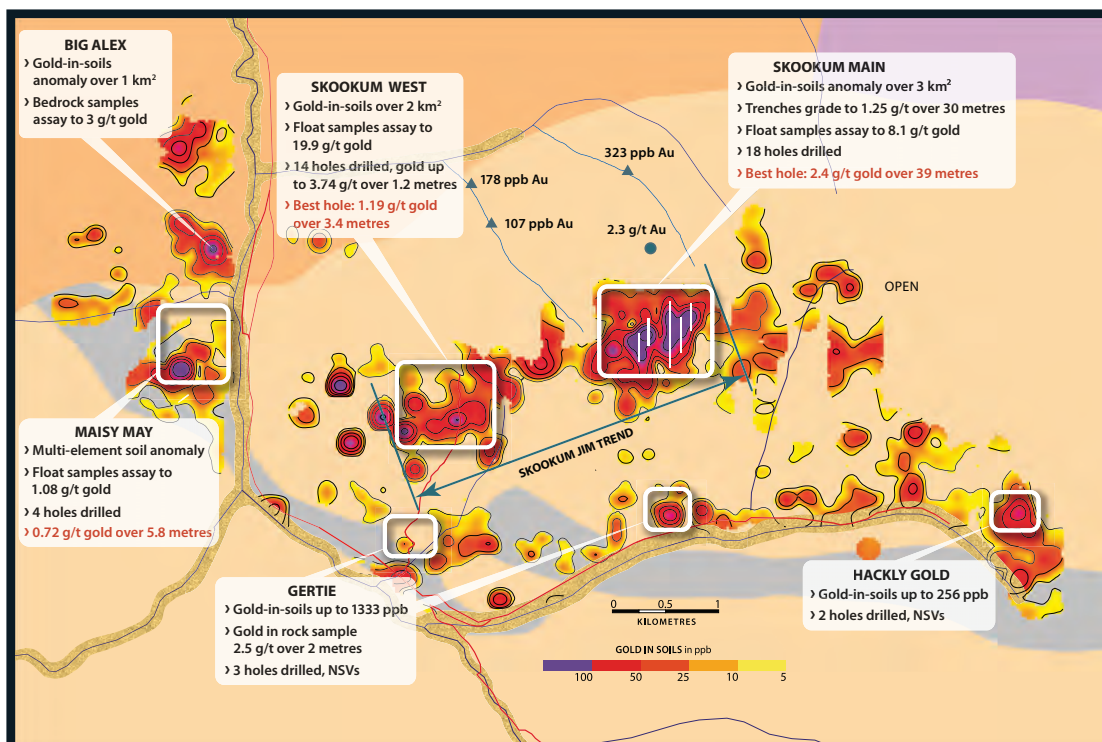
- Over 10,000 soil samples collected
- 7 gold-in-soil drill targets defined to date
- 5 targets saw initial drilling of 41 holes
- 20 holes in 3 targets intersected gold
- Up to 2.44 grams/tonne gold over 38.9 metres

### Mariposa 2012 Work Plan

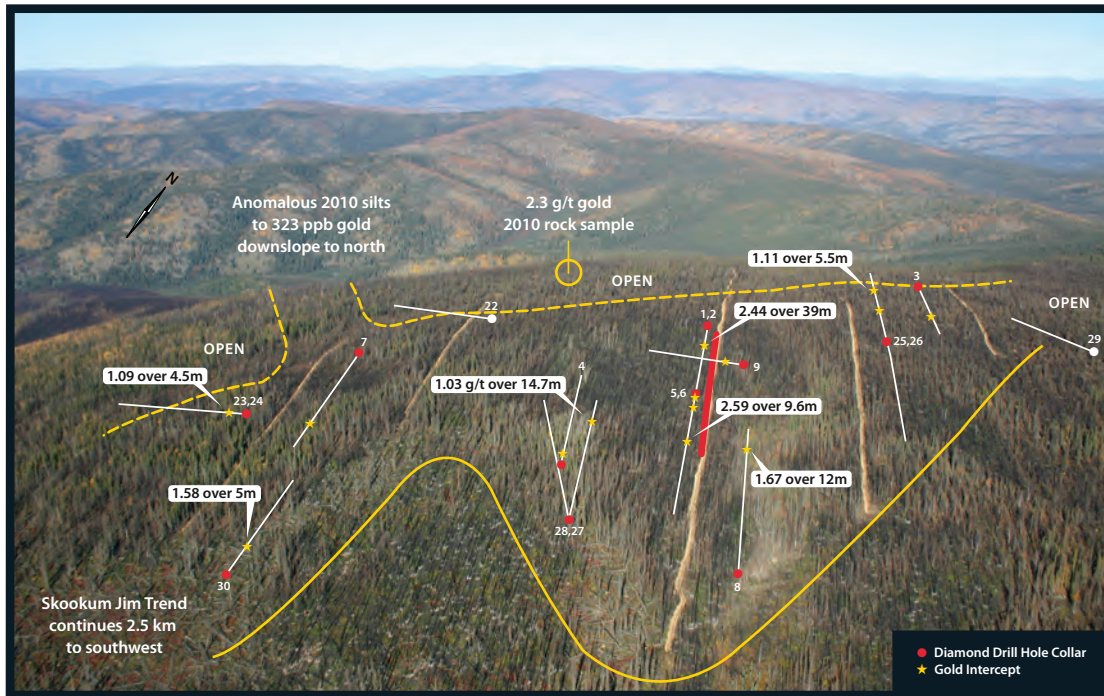
- 2012 Phase 1 program: \$2 million funding in place
- Drill plan: infill and expansion of target areas
- Trenching: areas with rocks up to 19.9 g/t gold



Pacific Ridge in the White Gold District



Mariposa 2011 Drilling Areas



Skookum Main Drilling Highlights

### GOLD CAP | POLAR STEWART

Flanking the northeast boundary of the Kinross White Gold claims, Gold Cap's initial geochemical sampling defined three subparallel multi-element anomalies two to four kilometres long. Gold-in-soil values up to 290 ppb occur in the northern, open end of this trend.

Adjoining Gold Cap to the east, Polar Stewart has seen reconnaissance sampling, which has returned gold-in-soil values up to 634 ppb.

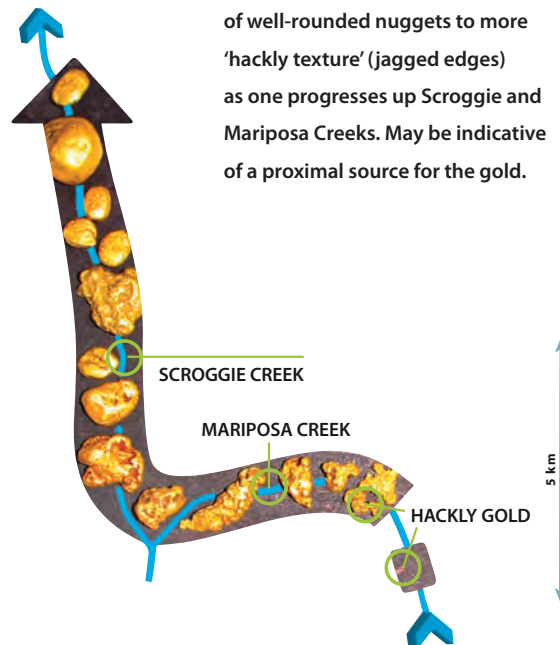
### EUREKA DOME

Evidence of gold in the area are placer workings along Eureka and Black Hills Creek, as well as elevated gold in silt samples from creeks draining the property.

Silicified and brecciated rocks with anomalous barium, arsenic, and mercury indicate an epithermal system with gold potential at depth. 2012 soil sample results are pending.

### Active Placer Mining on Scroggie Creek

Gold habit shows progression of well-rounded nuggets to more 'hackly texture' (jagged edges) as one progresses up Scroggie and Mariposa Creeks. May be indicative of a proximal source for the gold.



## JOINT VENTURE OPPORTUNITIES

### BAKER BASIN URANIUM

The company holds claims covering a 60 kilometre length of the southern margin of the Baker Basin, which hosts over 20 uranium prospects. Initial drilling by the Company has yielded grades to 0.30% U<sub>3</sub>O<sub>8</sub> over 17 metres at the Lucky-7 Zone and 0.84% U<sub>3</sub>O<sub>8</sub> over 5.4 metres at the KZ Zone. With renewed interest in uranium exploration in the area, the Company is seeking joint venture participation.



Baker Basin Uranium

### FYRE LAKE COPPER-GOLD

With copper prices at historical high trading ranges, the Kona copper-gold deposit at Fyre lake has regained attention as a drill-established resource that remains open for expansion to depth. The deepest holes drilled have intersected 5.6% copper over 3.0 metres, 3.2% copper over 5.7 metres, and 6.1% copper over 7.0 metres.



Fyre Lake Copper-Gold

Adjacent geophysical targets, indicating potential for massive sulphides, remain to be tested. The Company is considering joint venture participation.

#### 2006 NI 43-101 compliant resource includes:

	Tonnes (mil)	Copper (%)	Cobalt (%)	Gold (g/t)
Indicated	3.6	1.57	0.10	0.61
Inferred	5.4	1.48	0.08	0.53

#### MANAGEMENT TEAM

**John Brock**, BSc (Geo/Geoph) | President and CEO

**Janice Fingler**, PGeo | Vice President Exploration

**R.E. Gordon Davis**, PEng | Director

**Sargent H. Berner**, LLB | Director

**Douglas Proctor**, CA | Director

**Bruce Youngman**, BSc (Geo) | Director

**Lei Wang**, CGA | Chief Financial Officer

**Arie Page**, LLB | Corporate Secretary



**Pacific Ridge Exploration Ltd.**

1100. 1199 West Hastings Street

Vancouver BC V6E 3T5

604 687 4951

jsbrock@mnxlltd.com

www.pacificridgeexploration.com

**Investor Inquiries**

G2 Consultants Corp.

604 742 9990

Toll-free 1 866 742 9990

info@g2consultants.com

Pacific Ridge's disclosure of a technical or scientific nature has been reviewed by Janice Fingler, PGeo, Vice President, Exploration of Pacific Ridge and a Qualified Person under the definition of National Instrument 43-101. Pacific Ridge Exploration (the "Company") expressly warns readers not to rely on the information contained herein for investment or other related purposes. Accordingly, any use of this information is at the reader's risk and without liability to the Company. The information contained herein is not to be construed as either a public or private offer or solicitation to purchase securities in the capital stock of Pacific Ridge Exploration. The reader is referred to his/her professional investment advisor regarding investment or related decisions respecting the securities of the company.